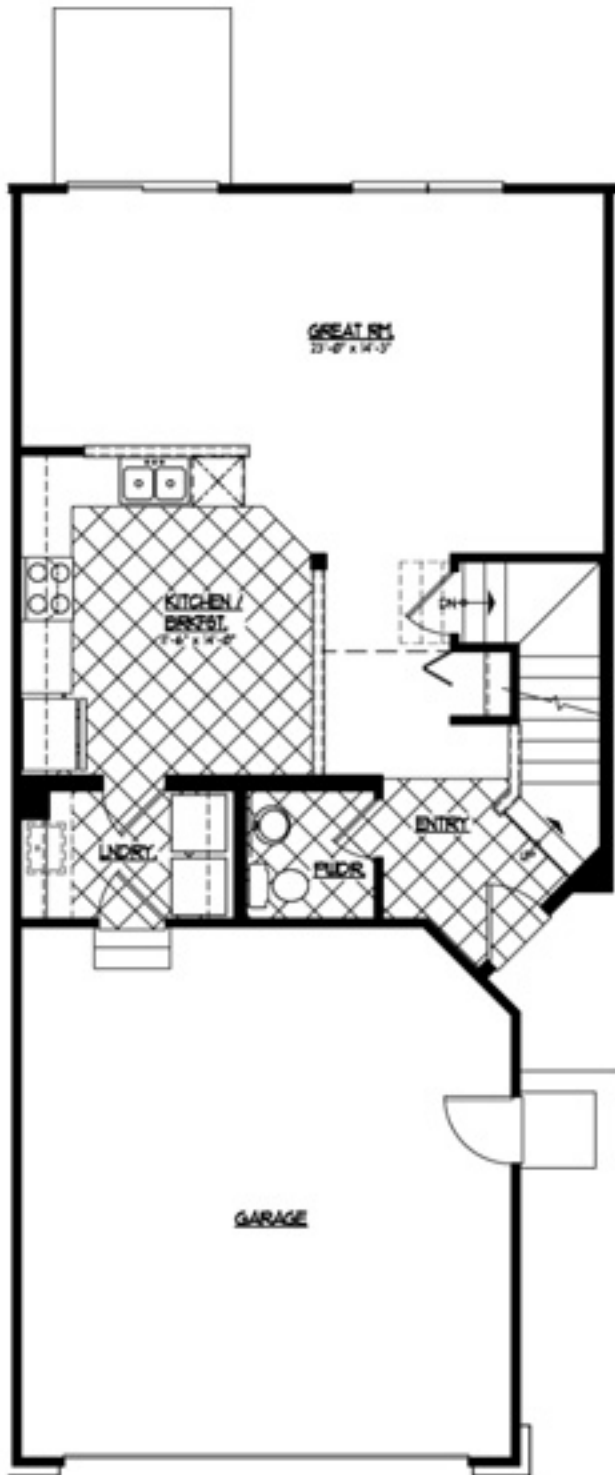


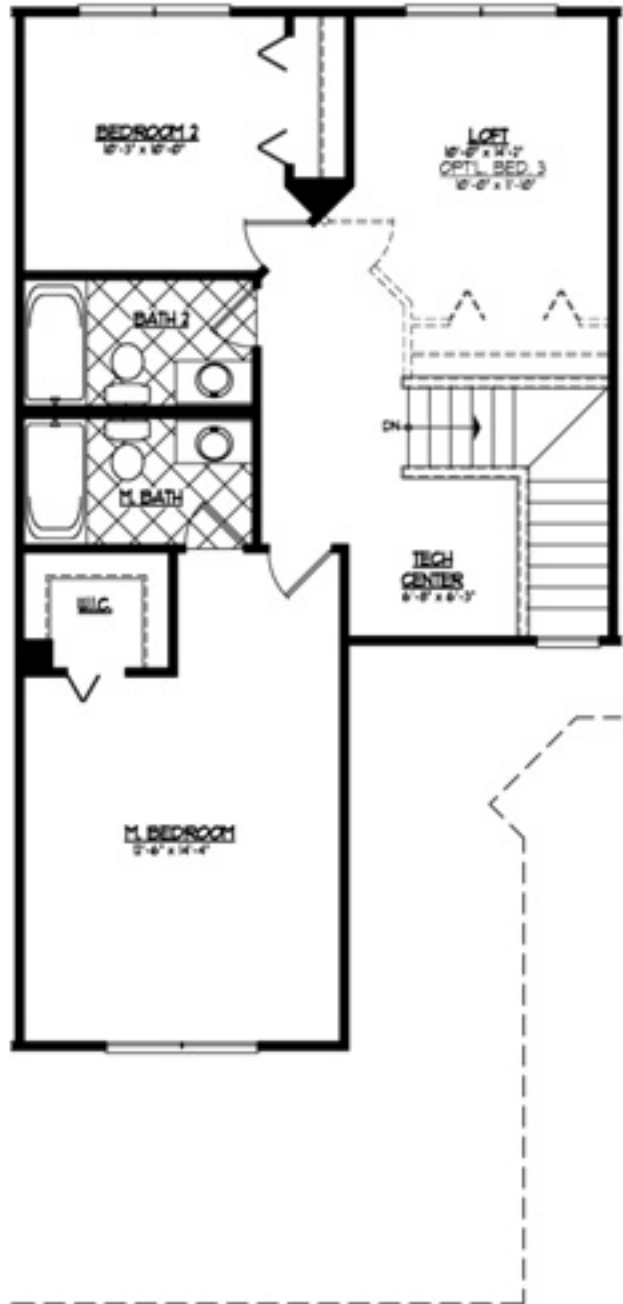
# Buckingham Orchard - Americana Series - The Dearborn II



FIRST FLOOR PLAN

SCALE: 1/4" = 1'-0"

104 SQ. FT. (104 TOTAL SQ. FT.)



SECOND FLOOR PLAN w/  
2 BATH OPTION

SCALE: 1/4" = 1'-0"

100 SQ. FT.



# Buckingham Orchard

*Introducing the AMERICANA homes at  
Buckingham Orchard! Exceptional design and  
location made affordable.*

Special "Launch" Savings For A Limited Time Only!

THE DEARBORN	<del>\$314,990</del>	\$299,990
THE DEARBORN II	<del>\$322,990</del>	\$307,990
THE DEARBORN III	<del>\$328,990</del>	\$313,990

Ask for Details on Available Locations

*All plans feature two car garages, 2 - 3 bedrooms, 1 ½ to 2 ½ baths and basements.  
Please refer to the distinctive features insert in your brochure and ask your sales  
consultant for additional information.*

**(630) 261-9404**

Prices shown do not reflect location premiums or other options. The renderings and floor plans shown are an artist's conception; dimensions and details may vary. Features, prices and designs are subject to change without notice. 10/1/07

## **AMERICANA SERIES FEATURES**

### **IMPRESSIVE EXTERIORS**

- Custom Architectural Detailing
- Attractive and Enduring Brick accents and Vinyl Siding
- Professionally Designed Landscaping
- Raised Panel Fully Insulated Front Entry Door
- "Paint Free" Highly Efficient Vinyl Insulated Single Hung Windows
- Aluminum Gutters, Soffits and Fascia
- Conveniently Located Frost Proof Hose Bibb
- Attached Two Car Garage with Drywalled Interior and Convenient Service Door
- Energy Efficient and Low Maintenance Steel Overhead Garage Door

### **ELEGANT INTERIORS**

- Dramatic Nine Foot First Floor Ceilings
- Bright and Airy Second Floor Loft Space
- Spacious and Dramatic Great Rooms and Kitchens
- Attractive and Easy Care Armstrong Vinyl Flooring in Foyer and Powder Room
- Elegant White Painted Colonial Trim with Panel Doors
- Beautiful Staircases with Custom Half Walls with Wood Caps
- Decorator Selected Shaw Wall to Wall Carpeting
- Conveniently Located Linen Closets (per plan)
- First Floor Laundry Closet with Hook-Ups for Washer and Gas Dryer
- Designer Selected Brushed Nickel or Brass Lighting Fixture Package
- Premium Quality Sherwin Williams® Paint
- Elegant Kohler® Plumbing Fixtures
- Tech Center Flex Space on Second Floor

### **GOURMET KITCHENS**

- Custom Designed Aristocraft® Wood Cabinetry
- Spacious Countertops for Expansive Preparation Area
- GE® Self Cleaning Free Standing Gas Oven
- GE® Over Range Hood
- Double Bowl Stainless Steel Sink with Uni-Lever Faucet and Vegetable Sprayer
- Multi-Cycle GE® Dishwasher
- Charming Breakfast Nook
- Easy Care Armstrong® Vinyl Flooring
- InSinkErator 1/2 HP Sink Disposal Unit

### **GLAMOROUS BATHS**

- Private Access to Owner's Bath
- Kohler® Plumbing Fixtures
- Custom Designed Aristocraft® Wood Cabinetry
- Cultured Marble Vanity Tops with Integral Bowls
- Full Width Mirrors over Vanities-
- Sterling by Kohler® Pedestal Sink in Powder Room
- Attractive and Easy Care Vinyl Flooring
- Towel Bar and Tissue Holder
- Ceramic Wall Tile in Shower Area with Shampoo Niche
- Medicine Cabinet

### **MEMORABLE OWNER'S SUITES**

- Decorator Selected Wall to Wall Carpeting
- Spacious Walk-in Closets with "Free-Slide" Ventilated Wire Shelving
- Private Bath with Separate Soaking Tub and Shower (per plan)
- Designer Friendly Design with Two "Bed Walls"

### **IMPORTANT INCLUSIONS**

- Full 8' Basements (Per Plan)
- Carrier® Gas Forced Air Heating System
- 40 Gallon Gas Hot Water Heater
- Underground Utility Services
- Prewiring for Four Category 5 Telephones / TV Outlets
- Smoke Detectors Hard Wired with Battery Back-up
- 100 AMP Electrical Service
- Ground Fault Interrupter Circuitry (per plan)
- Energy Saving R-13 Exterior Wall and R-30 Ceiling Insulation
- Air Infiltration Barrier House Wrap
- Thermacete® Party Wall System for Sound Control and Safety

### **DESIRABLE OPTIONS**

- 13 SEER Efficiency Air-conditioning
- Third Bedroom Instead of Loft
- Spacesaver Over Range GE® Microwave
- Cedar Deck
- 36" Upper Cabinets in Kitchen and other Cabinetry Upgrades
- Oak Stair Rails
- Flooring Upgrades: Hardwood, Ceramic and Carpet
- Whole Home Audio/Entertainment System
- Granite or Quartz Countertops

In order to provide homes of lasting value, our policy is one of constant innovation and improvement. Consistent with this policy, we reserve the right to make product, design or price changes without notice or obligation.  
Rev10/07